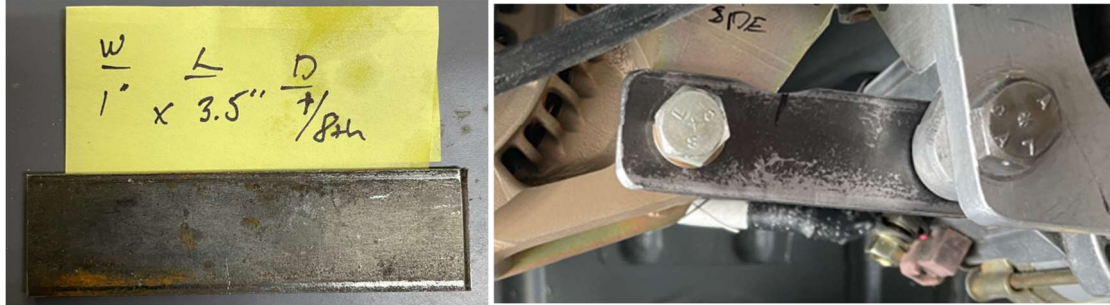


Brace from alternator to starter

Engines are always moving, and I do what I can to tie everything down. I use a brace between the alternator and starter. The local metal yard gave me a small piece of a mild steel bar stock. Some filing and sanding of the edges was followed by drill press work. The starter side has a hole of 7/16ths, and the alternator pivot mount uses a 3/8ths bolt. Carefully clamping the piece, slow speed and cutting oil with a step bit gave a nice round hole.



Adding a quarter inch to the alternator pivot meant buying a new bolt. I replaced the B&C close tolerance nut with a castle nut and cotter pin.